



K2 and SharePoint 2010

More options, more efficiency, more K2 capabilities

“SharePoint worked very well for us to a point, but we kept hitting walls. ... We figured out very quickly that we needed something else – something that was easy to use, something that would streamline our processes while reducing the possibility for errors and delays, and something that would allow us to reuse our workflows across multiple processes.”

RYAN SHELL Manager, Sales Administration, Armitron

With enhanced information lifecycle capabilities, new community-based features and improved integration with line-of-business systems, the SharePoint 2010 platform allows you to solve more business problems than ever before. K2 continues to provide the tools and capabilities you need to streamline your operations and SharePoint investments, regardless of how simple or complex your needs may be.

MULTIPLE GRAPHICAL DESIGNERS TO SUIT ANY NEED

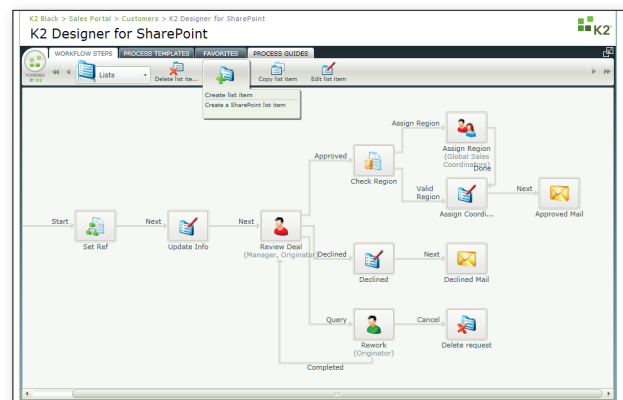
K2 provides several process-design environments that allow a broad set of users to be involved in design and assembly.

The K2 Designer for SharePoint, available in both K2 blackpearl and K2 blackpoint, is a Web-based process designer. It is specifically focused on providing an easy, no-code venue for SharePoint users to build processes based on items and documents within the SharePoint environment. (fig. a)

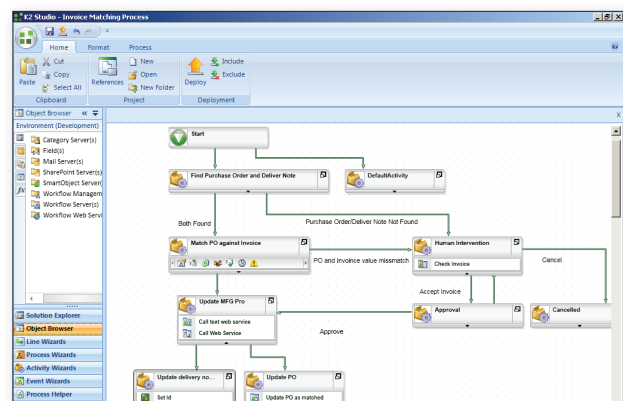
K2 Studio, also available in both K2 blackpearl and K2 blackpoint, is a client-based, Office-like designer. It allows users to build non-item- and non-document-based processes within a SharePoint environment, as well as non-SharePoint-related processes and K2 SmartObjects, without the need for code. (fig. b)

For developers, K2 blackpearl provides the **K2 Designer for Visual Studio**, hosted within the Visual Studio environment. (fig. c)

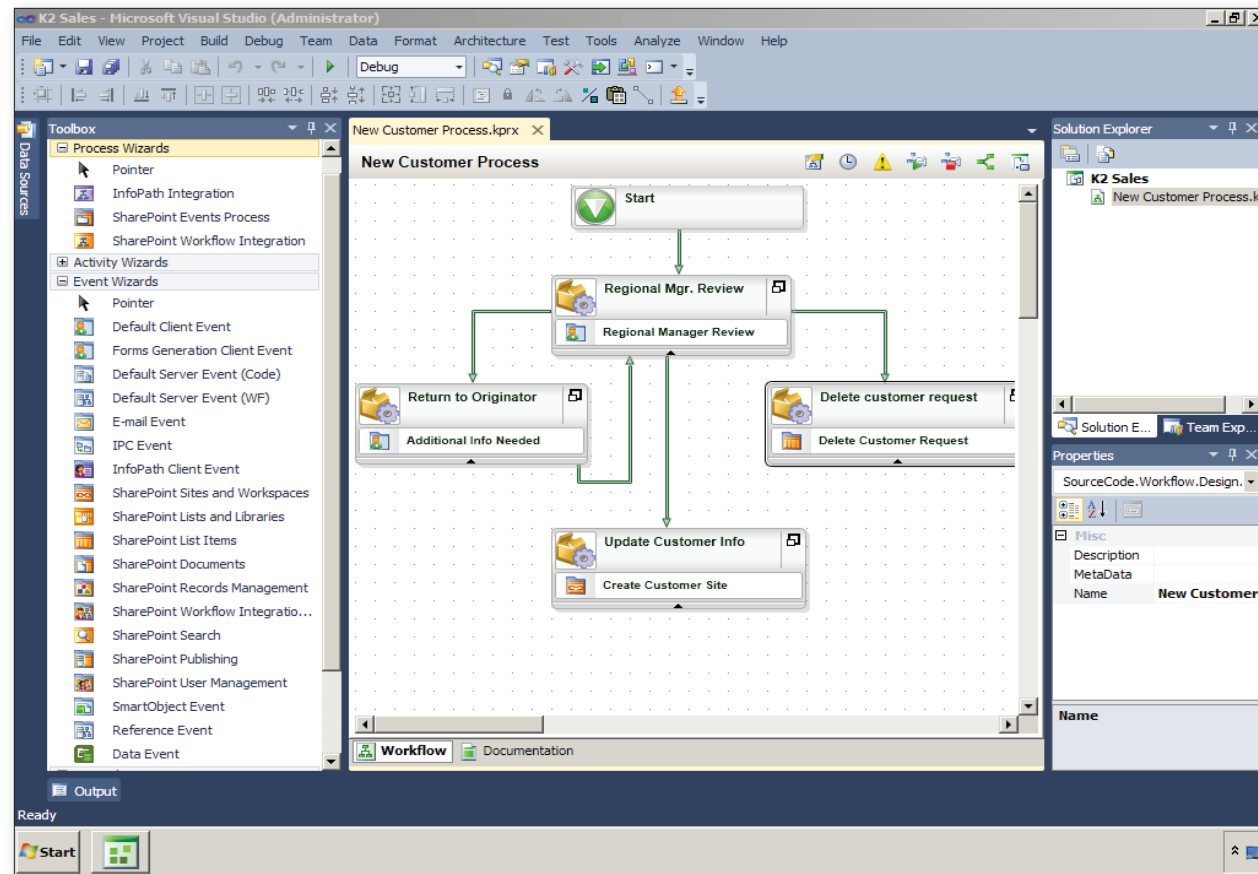
(a)



(b)



(c)



All the designers provide a graphical, drag-and-drop design experience, and each is tailored to meet the needs of a different type of process designer. This empowers more people in the organization to collaborate on workflows and applications that solve real business problems.

PROCESS LIFECYCLE MANAGEMENT

K2 gives users a full set of capabilities for managing all aspects of the process lifecycle.

With K2 **process versioning**, the K2 Server keeps track of each version of a process as it is deployed and ensures that all process instances run on the appropriate version. This allows you to maintain a high level of governance and auditability for all your processes.

K2 **process and user security** allows process administrators to set up rules about exactly who can be involved in a process and to what extent they can be involved. This level of security provides a great

deal of flexibility for incorporating the most complex level of task-allocation rules into your business processes.

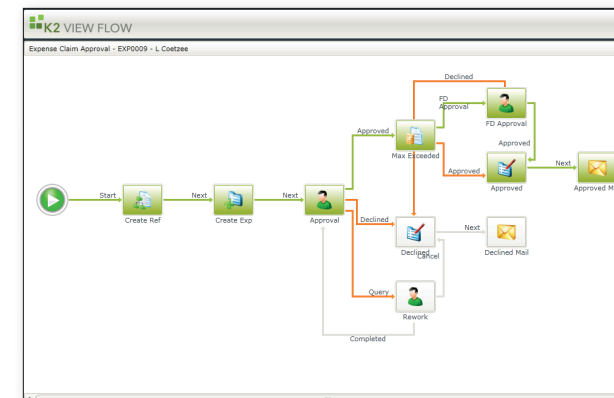
The **process instance management** capabilities included in the K2 software allow administrators and developers to keep track of all instances of a process, from start to finish. Whether an error has occurred or a bottleneck needs to be resolved, K2 provides capabilities to handle these scenarios easily.

REPORTING CAPABILITIES

Both K2 blackpearl and K2 blackpoint provide a rich set of reporting capabilities for great visibility.

The **K2 View Flow** provides a real-time, graphical representation of any K2 process so that business users and administrators alike have insight into the status of any process at any given time. It also provides access to decisions made, the names of the people who made those decisions and other important process information. (fig. d)

(d)

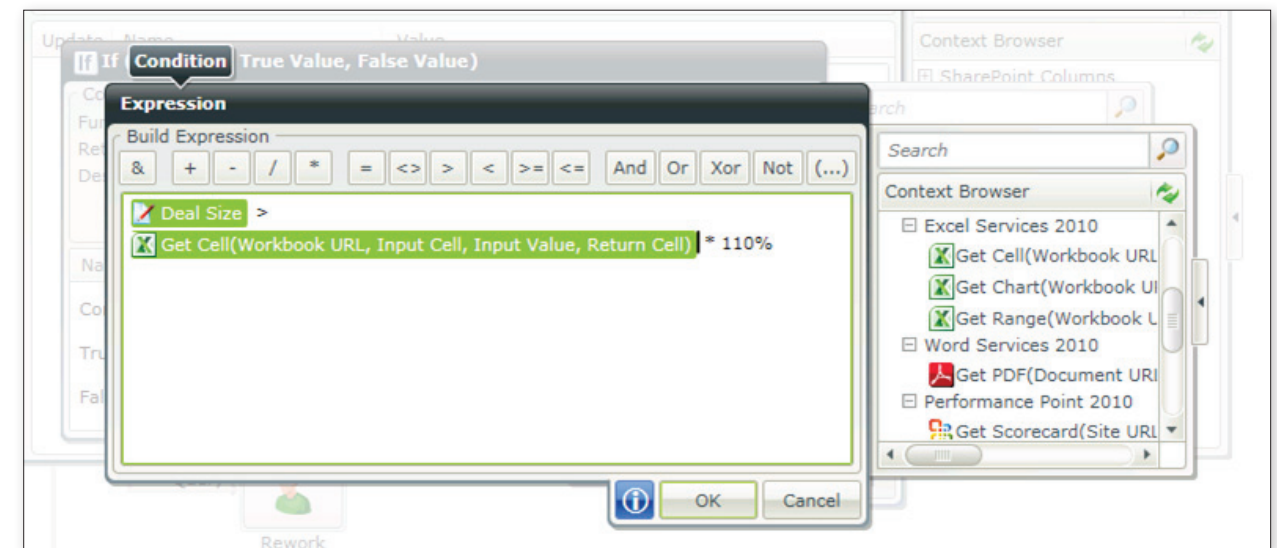


A set of standard **reports** is available in both K2 blackpoint and K2 blackpearl that provide a graphical view of key performance indicators, such as process duration and user efficiency. Each report can be filtered on different criteria to provide multiple views into the efficiency of the process.

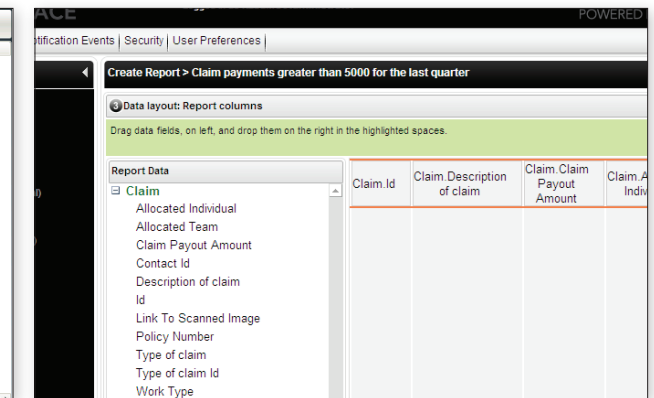
If additional reports are required, K2 blackpearl includes a rich, **drag-and-drop report designer**. It allows both business users and administrators to build reports using process data and K2 SmartObject data that can be filtered and manipulated in multiple ways. (fig. e)

Both K2 blackpearl and K2 blackpoint also include the **K2 ADO.NET Data Provider**. This gives developers access to K2 process and SmartObject data that can be surfaced in any .NET-based application or report,

(f)



(e)



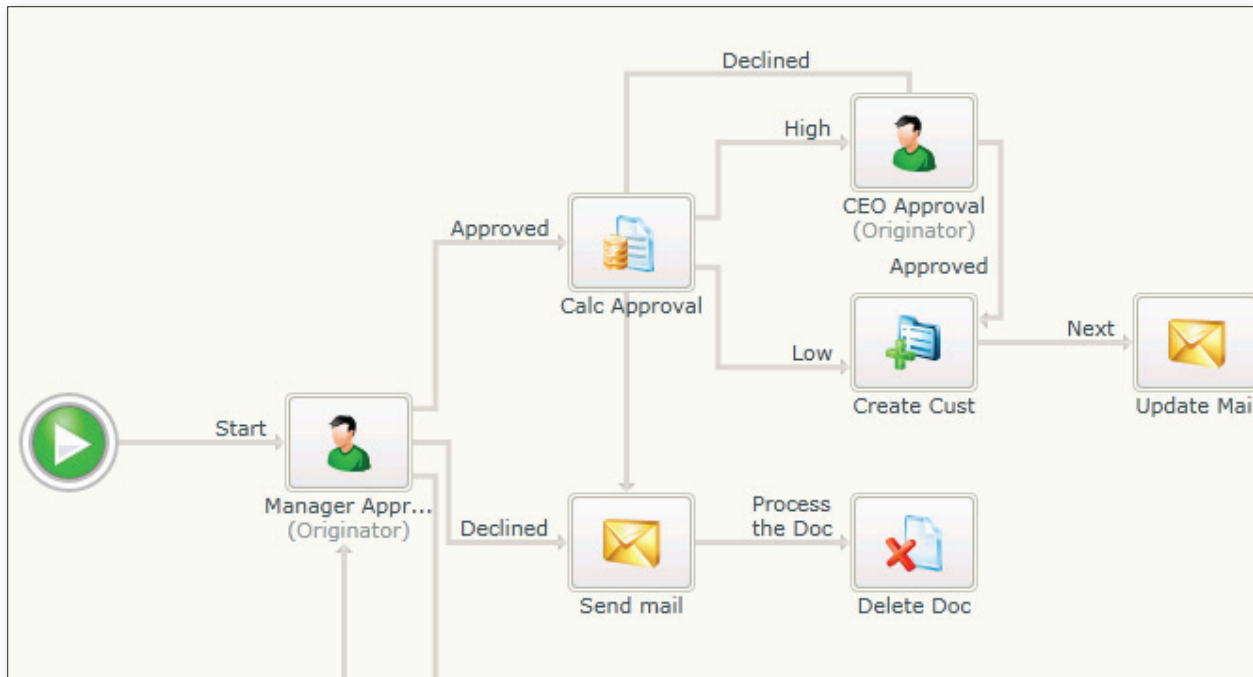
and it allows for maximum flexibility in displaying important information to users.

COMPLEX BUSINESS LOGIC

K2 Inline Functions are included in all K2 process designers and provide the ability to include complex business logic and calculations into a process using a simple drag-and-drop interface.

They eliminate the need for writing code. Inline Functions can use any process data, SharePoint list information or K2 SmartObject data as input; and they include many common functions, such as date/time manipulations, text formatting and mathematical calculations, out-of-the-box. Inline Functions can be used to provide complex task-routing logic, data formatting and line-of-business data manipulations for any process. (fig. f)

(g)



ENTERPRISE-CLASS WORKFLOW ENGINE

The **K2 Server** is built using Windows Workflow Foundation and includes many enterprise-level features that you may not find in other workflow server implementations.

From a process design perspective, K2 provides the ability to build processes that not only loopback to previous steps but have the capability to route to any step of the process from any other step in the process. This allows for **reuse of business logic** at any step of the workflow, reducing maintenance time and ensuring that similar tasks are consistent throughout the entire process. (fig. g)

During runtime, the K2 Server provides end users with the ability to delegate or redirect a task to another person at any time and to limit the actions available to that person, if appropriate. An additional delegation capability is the K2 **Out-of-Office functionality**, which automatically reroutes tasks,

based on preferences. The K2 Out-of-Office capability ensures that critical business processes continue even if a key member of the process is out. Upon returning to the office, any tasks that have not been actioned by the delegate are automatically returned to the original user so that no important tasks are lost.

Finally, with the upcoming release of .NET 4.0 and Workflow Foundation 4.0, K2 has done work to ensure that any assets built on the new framework will run seamlessly in the K2 Server alongside any .NET 3.0 and .NET 3.5 assets you may already have in place. This unparalleled support will ensure that your existing processes and applications will continue to run without interruption, and it will enable scenarios in which users can build processes that span SharePoint farms running different versions of SharePoint.

To learn more about K2 and SharePoint 2010, please visit us at www.k2.com/sharepoint2010.